

0CNP4-M72100EN

Directions for the Parts Catalog.

1. This Parts Catalog shows both standard and optional parts.
2. Parts may change without prior notice.
3. The following is an example of the Parts Catalog format.

REF.	LEV.	PARTS NO.	DESCRIPTION	Q'TY						I	R
				(A)	(B)	(C)	(D)	(E)	(F)		
1	1	729595-51390	FUEL INJECTION PUMP	1	1	1	1	1			1
1-1	1	729595-51391	FUEL INJECTION PUMP	1	1	1	1	1		N	1
		(A=E00185) (B=E00200)									
3	2	26022-060162	SCREW M 6X 16	9	9	9	9	9			
3-1	2	26022-060162	SCREW M 6X 16	4	4	4	4	4		K	
		(A=E00156) (B=E00156) (C=E00156) (D=E00156) (E=E00156)									
4	2	129470-51040	CAMSHAFT	1	1	1	1	1			
5	2	122710-51050	BEARING, ROLLER	2	2	2	2	2			
6	2	129470-51060	RETAINER	1	1	1	1	1			

Remarks
(1) BOOST COMPEMSATOR TYPE. OPTIONAL PART, TO E00155,(4JH-DT, 4JH-DTZ

① Ref. No.

The Ref. No. listed may not be in accordance with the illustration Ref. No.

(Ex.) Illustration No.

List Ref No.

1

1

(Before change) → 1-1 (After change)

For interchangeable symbols N, R and K, illustrations for new parts may be abbreviated.

② Lev. (Level)

Level indication

The numbers below indicate the level of relativity towards the main part.

1 ----- Main parts (Assembly parts)

2 ----- Sub component included in " 1 ".

3 ----- Sub component included in " 2 ".

Note) Parts that are not for sale are partially illustrated but not listed.

③ Interchangeability Symbol

When a part change takes place, one of the following interchangeability symbols is indicated beside the part.

Symbol	Interchangeability	Contents note
N	Old $\begin{matrix} \leftarrow \text{Yes} \\ \text{No} \rightarrow \end{matrix}$ New	New Part is interchangeable for Old Part but Old Part is not interchangeable for New Part.
Q	Old $\begin{matrix} \leftarrow \text{No} \\ \text{Yes} \rightarrow \end{matrix}$ New	New Part is not interchangeable for Old Part but Old Part is interchangeable for New Part.
R	Old $\begin{matrix} \leftarrow \text{Yes} \\ \text{Yes} \rightarrow \end{matrix}$ New	New/ Old Parts are both interchangeable.
S	Old $\begin{matrix} \leftarrow \text{No} \\ \text{No} \rightarrow \end{matrix}$ New	New/ Old Parts are both not interchangeable.
W		Part newly added.
Z		Part discontinued.
F		Not interchangeable by a single part but interchangeable together with related parts.
K		Changes only for used parts quantities.

④ Effective Machine No.

When a part changes, the effective Machine No. will be indicated in the (A)-(F) column.

Product Symbol	Product No.	Product Symbol	Product No.
C	Clutch No. Compressor No.	F	Machine No. (Agricultural Equip.)
D	Drive No.	M	Machine No.
E	Engine No.		

Note 1) A date may follow the symbol. (Ex.) 1996.01

Note 2) "XXXXX" and "ZZZZZ" are for parts that could not be predicted or for engine models that could not be identified.

Note 3) (A=E00185) is the E (Engine Serial Number) for the column (A) model (in this case 4JH-DT) after the parts design change.

⑤ Remarks

Figures or alphabets (symbols) are entered in the remarks column.

The comments (remarks) on parts that are indicated at the bottom of the illustration are the same symbols as those stated above.

Contents

Fig. No. Fig. Name

PULLEY & TENSION SECTION

1. ENGINE MOUNTING & PULLEY
2. MAIN PULLEY & TENSION

TRANSMISSION SECTION

3. TRANSMISSION CASE
4. MAIN & COUNTER SHAFTS
5. FINAL SHAFT & AXLE
6. MAIN CHANGE
7. SIDE CLUTCH

WHEEL SECTION

8. FENDER

HANDLE SECTION

9. HANDLE COLUMN(MOVE-ROUND)
10. HANDLE
11. CONTROL LEVER 1
12. CONTROL LEVER 2

ENGINE FRAME SECTION

13. ENGINE FRAME & HITCH
14. BELT COVER
15. BONNET

Fig. No. Fig. Name

LABELS & ACCESSORIES SECTION

16. ELECTRICAL PARTS
17. LABELS
18. LABELS(SAFETY)
19. TOOLS & ACCESSORIES

Fig.1. ENGINE MOUNTING & PULLEY

(A)=YK462,ZX

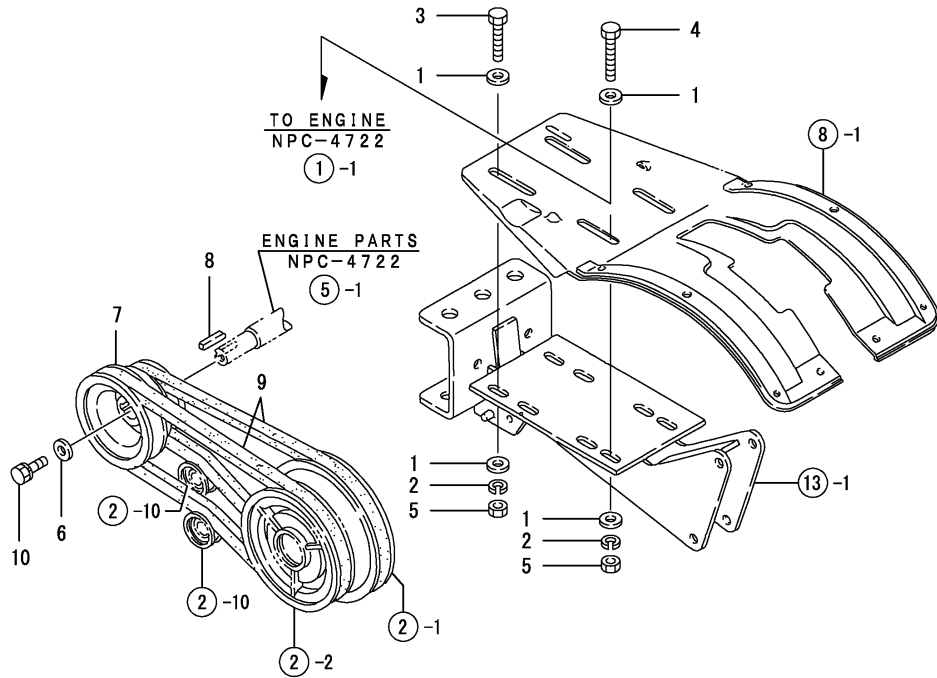
(B)=

(C)=

(D)=

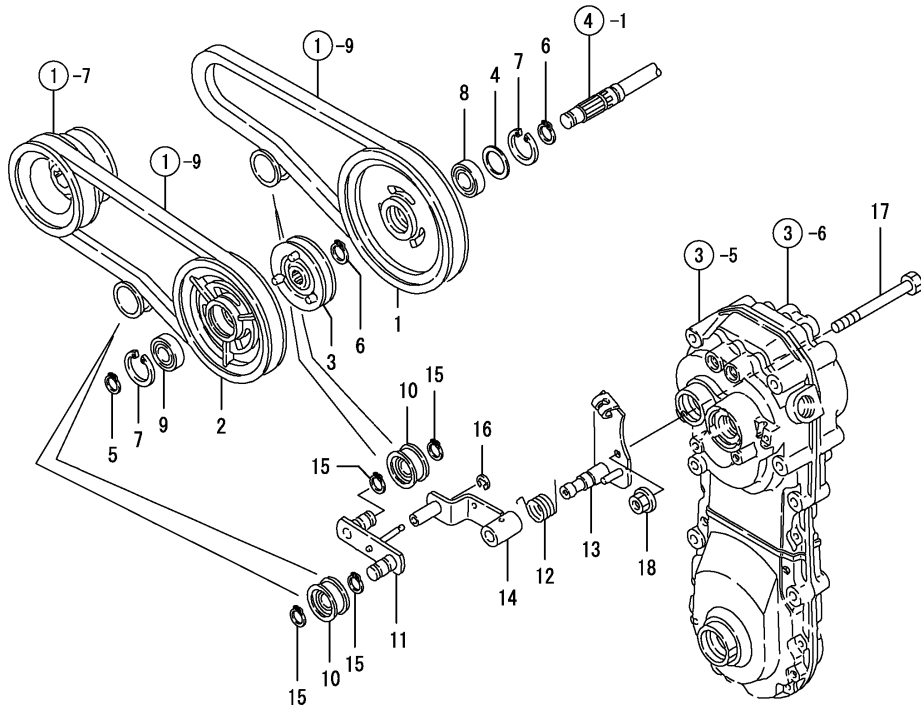
(E)=

(F)=



No.	Lev.	Parts No.	Description	Q'ty						I	R
				(A)	(B)	(C)	(D)	(E)	(F)		
1	1	22137-080000	WASHER, 8	8							
2	1	22217-080000	WASHER, SPRING 8	4							
3	1	26117-080402	BOLT M 8X 40	2							
4	1	26117-080452	BOLT M 8X 45	2							
5	1	26717-080002	NUT, M8	4							
6	1	1D1140-11420	WASHER,PULLEY	1							
7	1	1A2139-12000	PULLEY 422,ENGINE	1							
8	1	22512-050300	KEY, 5X 30	1							
9	1	25123-003501	V-BELT, B35H	2							
10	1	26013-080164	BOLT M 8X 16	1							
10-1	1	26013-080162	BOLT, M8X 16	1							R
(A=FZZZZZ)											

Fig.2. MAIN PULLEY & TENSION



(A)=YK462,ZX
(B)=
(C)=

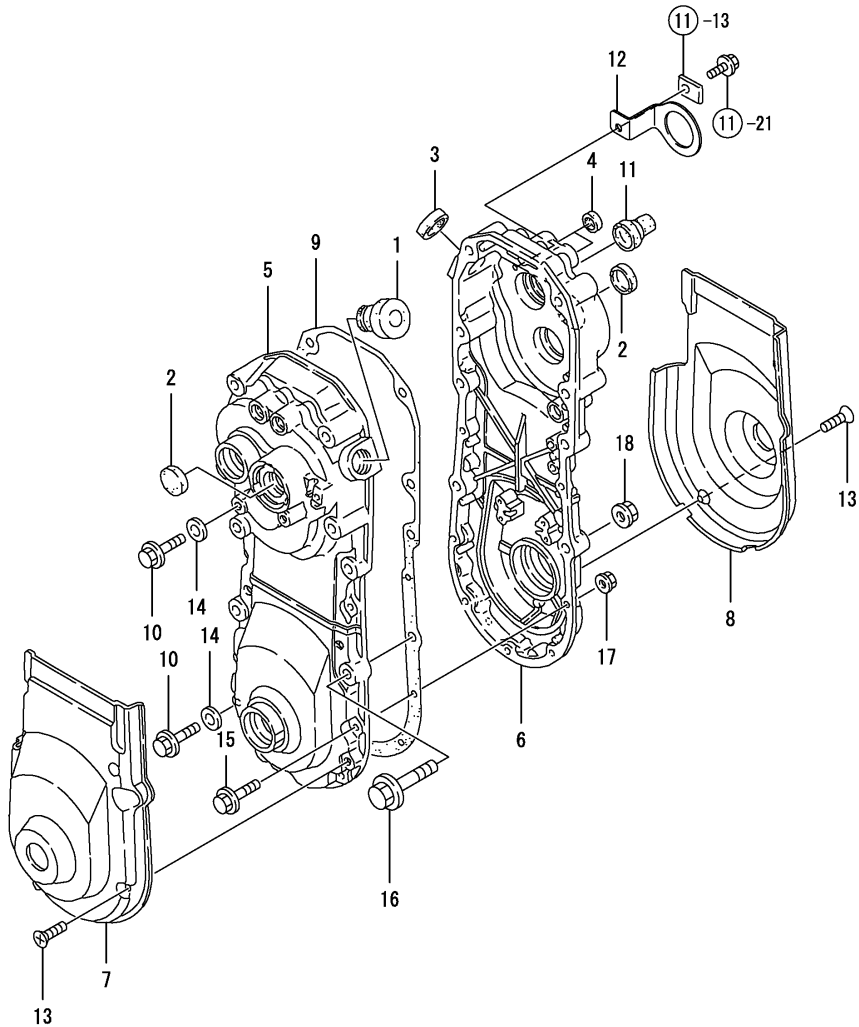
(D)=
(E)=
(F)=

No.	Lev.	Parts No.	Description	Q'ty						I	R
				(A)	(B)	(C)	(D)	(E)	(F)		
1	1	1A2009-13301	PULLEY 154,MN.SHAFT	1							
2	1	1A2139-13311	PULLEY 134,MN.SHAFT	1							
3	1	1A2009-13342	SHIFTER	1							
4	1	1A1105-23210	LINER, 34X24.2X1.0	1							
5	1	22242-000150	RING, 15	1							
6	1	22242-000170	RING, 17	2							
7	1	22252-000350	RING, 35	2							
8	1	24104-060034	BEARING, BALL 6003UU	1							
9	1	24104-062024	BEARING, BALL 6202UU	1							
10	1	1A2001-13051	ROLLER CMP,TENSION	2							
11	1	1A2001-13100	ARM CMP,TENSION AUX.	1							
12	1	1A2000-13190	SPRING,TENSION RETRN	1							
13	1	1A2130-13200	FULCRUM CMP,TENSION	1							
14	1	1A2139-13510	ARM COMP.,TENSION	1							
15	1	22242-000150	RING, 15	4							
16	1	22272-000060	RING, E- 6	1							
17	1	26157-101002	BOLT, M10X100 PLATED	1							
18	1	26377-100002	NUT, M10	1							

Fig.3. TRANSMISSION CASE

(A)=YK462,ZX
(B)=
(C)=

(D)=
(E)=
(F)=



No.	Lev.	Parts No.	Description	Q'ty						I	R
				(A)	(B)	(C)	(D)	(E)	(F)		
1	1	1A1470-20090	CAP 35,OIL FILLER	1							
2	1	1A1750-20410	CAP 30X5,SEAL	2							
3	1	1A1750-20421	CAP 26X6,SEAL	1							
4	1	1A1750-20431	CAP 18X7,SEAL	2							
5	1	1A1950-21100	CASE L,TRANSM.	1							
6	1	1A2130-21110	CASE R,TRANSMISSION	1							
7	1	1A2130-21150	COVER L,PROTECTIVE	1							
8	1	1A2130-21160	COVER R,PROTECTIVE	1							
9	1	1A1950-21201	GASKET, MISSION CASE	1							
10	1	1A2001-21250	BOLT M8X12,COLLAR HD	2							
11	1	1A1220-28290	CAP, PTO	1							
12	1	1A2139-28300	RETAINER, CAP PTO	1							
13	1	22867-600160	SCREW, 6X16	6							
14	1	23414-080000	GASKET, 8X1.0	2							
15	1	26106-060252	BOLT, M6X 25 PLATED	7							
16	1	26137-100502	BOLT, M10X 50 PLATED	1							
17	1	26367-060002	NUT, M6	7							
18	1	26377-100002	NUT, M10	1							

Fig.4. MAIN & COUNTER SHAFTS

(A)=YK462,ZX
(B)=
(C)=

(D)=
(E)=
(F)=

No.	Lev.	Parts No.	Description	Q'ty						I	R
				(A)	(B)	(C)	(D)	(E)	(F)		
1	1	1A2139-23010	SHAFT 422,MAIN	1							
2	1	1A2130-23020	GEAR 14	1							
3	1	1A2130-23030	GEAR 19	1							
4	1	1E4060-74090	LINER 17X24X1	1							
5	1	22242-000170	RING, 17	1							
6	1	24101-062034	BEARING, BALL 6203	2							
7	1	24421-173008	SEAL, OIL TC173008	2							
8	1	1A2130-23110	GEAR 31,SLIDE	1							
9	1	1A2130-23200	SHAFT,H SUB-	1							
10	1	1A2130-23210	GEAR 13	1							
11	1	1A2130-23220	GEAR 40,SLIDE	1							
12	1	194405-83920	BEARING, BALL TMB202	1							
13	1	22242-000170	RING, 17	1							
14	1	24101-062034	BEARING, BALL 6203	1							

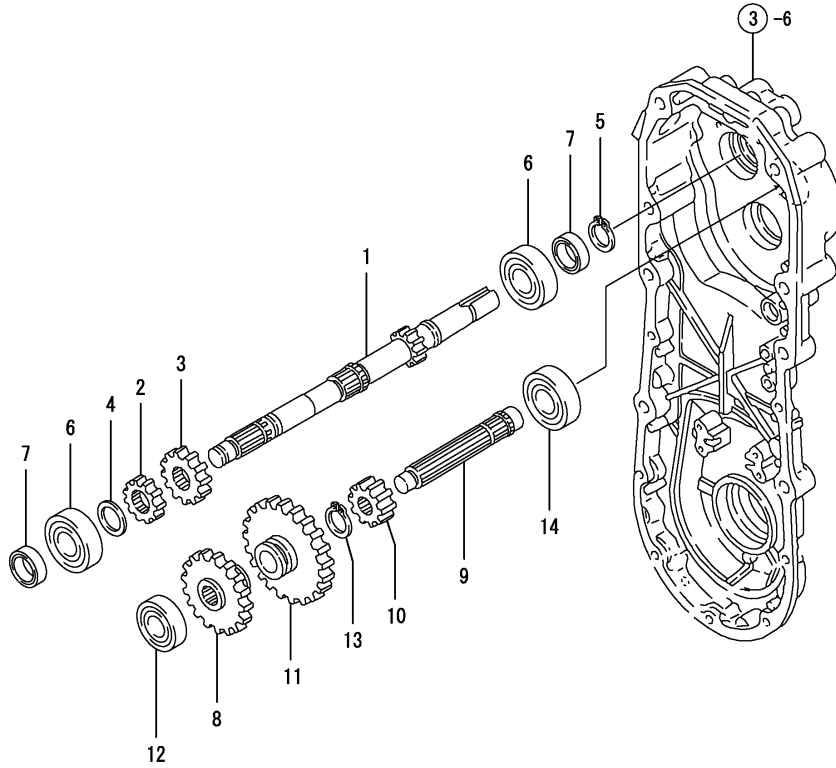
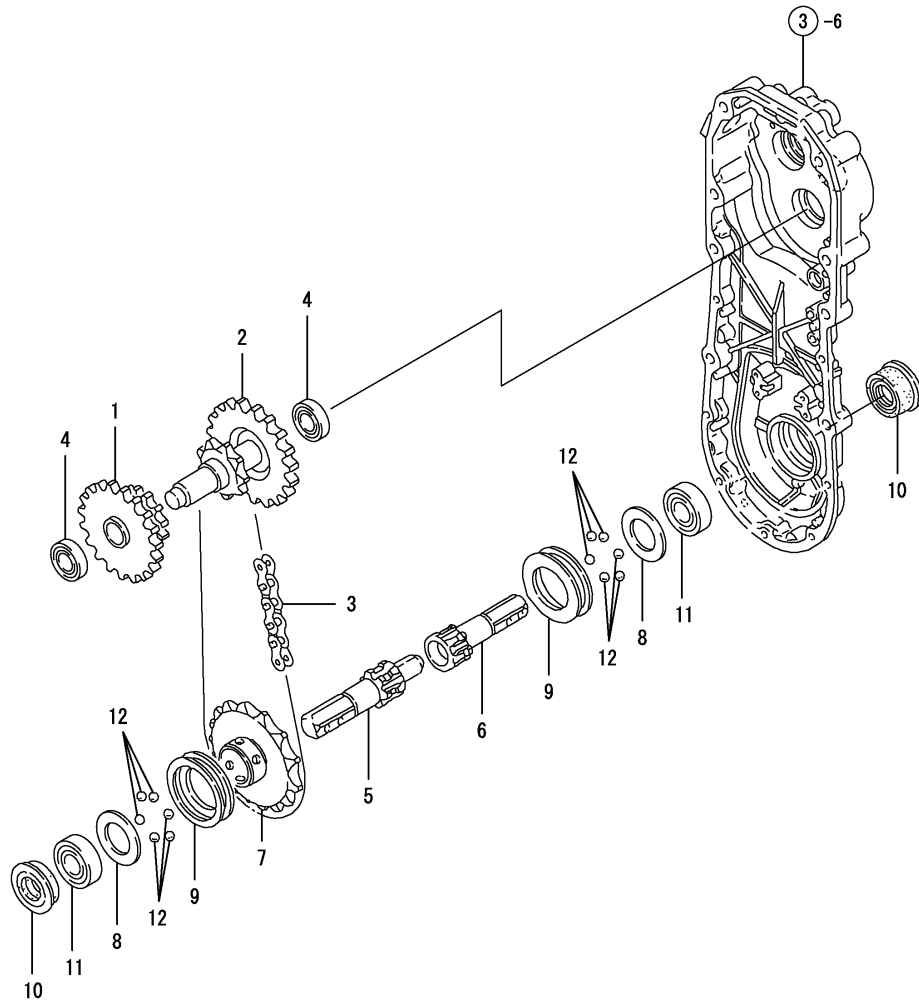


Fig.5. FINAL SHAFT & AXLE



(A)=YK462,ZX
(B)=
(C)=

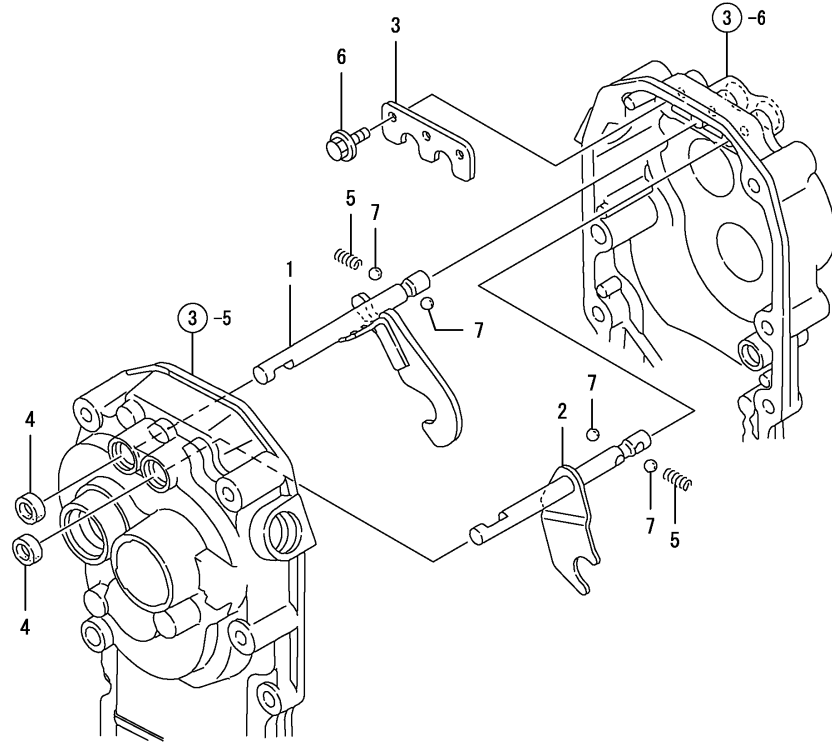
(D)=
(E)=
(F)=

No.	Lev.	Parts No.	Description	Q'ty						I	R
				(A)	(B)	(C)	(D)	(E)	(F)		
1	1	1A2130-23830	GEAR 40X20	1							
2	1	1A2139-23900	FINAL SHAFT CMP	1							
3	1	1A2139-23950	CHAIN 15.875X46	1							
4	1	194405-83920	BEARING, BALL TMB202	2							
5	1	1A2009-24501	AXLE A	1							
6	1	1A2009-24511	AXLE B	1							
7	1	1A2000-24520	SPROCKET,AXLE	1							
8	1	1A2000-24530	LINER 27X45X2	2							
9	1	1A2000-24550	SHIFTER	2							
10	1	1A2171-90050	SEAL 254411,OIL	2							
11	1	24101-062054	BEARING, BALL 6205	2							
12	1	24190-120001	BALL, STEEL 3/8	12							

Fig.6. MAIN CHANGE

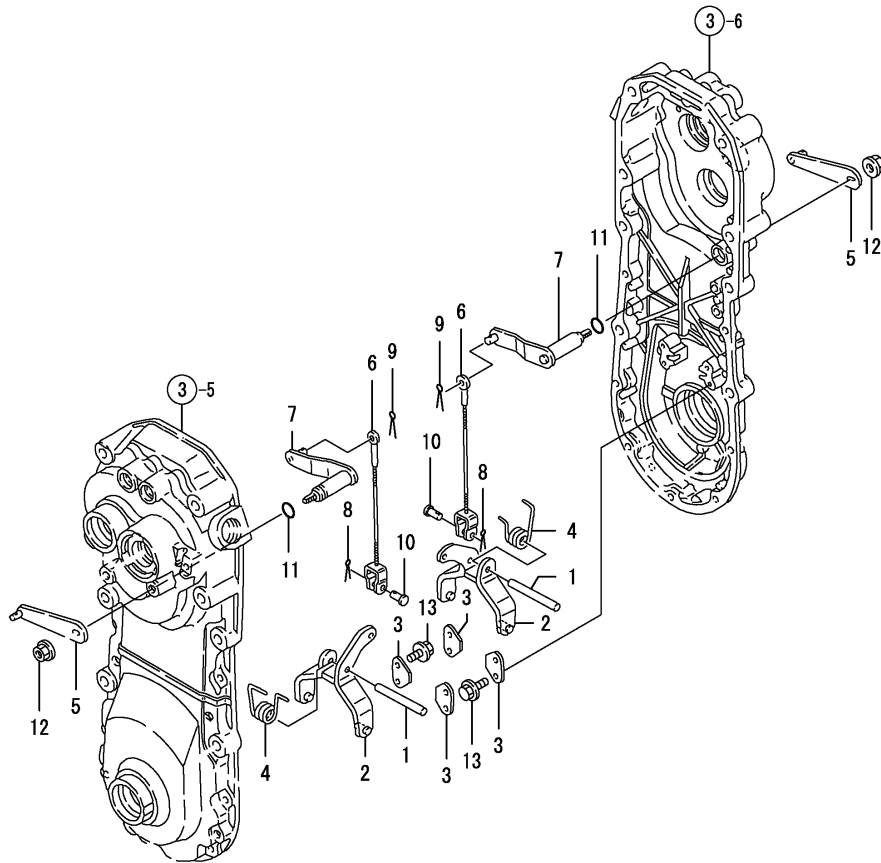
(A)=YK462,ZX
 (B)=
 (C)=

(D)=
 (E)=
 (F)=



No.	Lev.	Parts No.	Description	Q'ty						I	R
				(A)	(B)	(C)	(D)	(E)	(F)		
1	1	1A2130-27000	SHAFT A COMPL.,FORK	1							
2	1	1A2130-27050	SHAFT B COMPL.,FORK	1							
3	1	1A2130-27100	PLATE,BALL KEEP	1							
4	1	1A2173-27900	SEAL, TC121805	2							
5	1	1E6150-56040	SPRING, FORK	2							
6	1	1A1750-90200	SCREW 6X12,COLLAR HD	3							
7	1	24190-100001	BALL, STEEL 5/16	4							

Fig.7. SIDE CLUTCH



(A)=YK462,ZX
(B)=
(C)=

(D)=
(E)=
(F)=

No.	Lev.	Parts No.	Description	Q'ty						I	R
				(A)	(B)	(C)	(D)	(E)	(F)		
1	1	1A1470-20700	PIN 8X55	2							
2	1	1A2000-27530	FORK COMP.,SD.CLUTCH	2							
3	1	1A2000-27600	PLATE,SD.CLUTCH KEEP	4							
4	1	1A2000-27650	SPRING,SD.CLTCH TORS	2							
5	1	1A2130-27700	ARM COMP,SIDE CLUTCH	2							
6	1	1A1950-27750	CLUTCH,CABLE SIDE	2							
7	1	1A1950-27800	SHAFT COMP,SD.CLUTCH	2							
8	1	22417-160120	PIN, COTTER 1.6X12	2							
9	1	22417-200120	COTTER PIN 2.0X12	2							
10	1	22487-060120	PIN, H 6X 12	2							
11	1	24311-000100	O-RING, 1AP10.0	2							
12	1	26367-080002	NUT, M8	2							
13	1	26476-060142	SCREW, TAPPING M6X14	8							

Fig.8. FENDER

(A)=YK462,ZX
(B)=
(C)=

(D)=
(E)=
(F)=

No.	Lev.	Parts No.	Description	Q'ty						I	R
				(A)	(B)	(C)	(D)	(E)	(F)		
1	1	1A2130-32000	FENDER	1							
2	1	7A2139-32100	FENDER EXT PL ASY	1							
3	1	1A2139-32150	FENDER,EXTENSION	1							
4	1	26106-080122	BOLT, M8X 12 PLATED	6							
5	1	26107-080122	BOLT M 8X 12 PLATED	2							
6	1	26367-080002	NUT, M8	5							

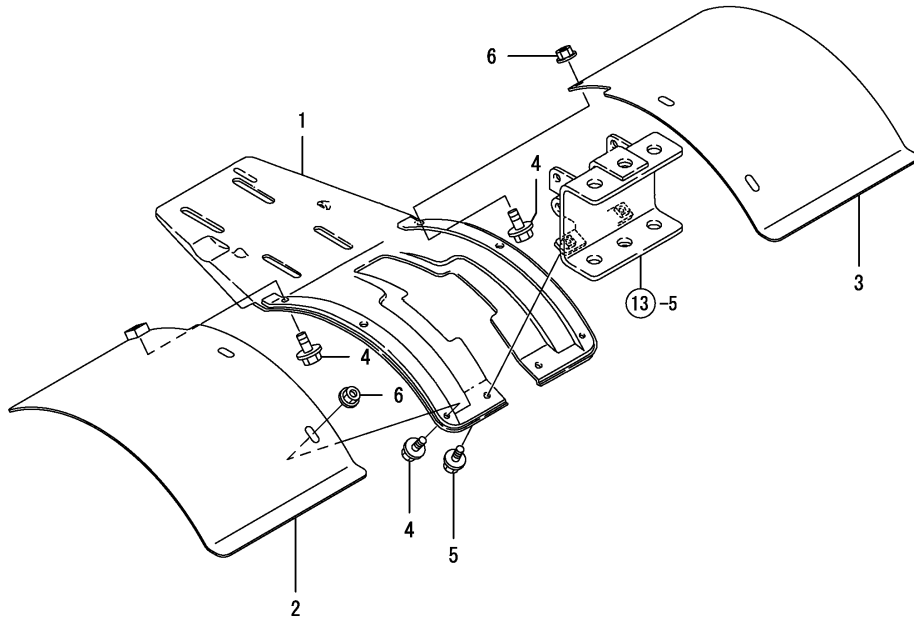
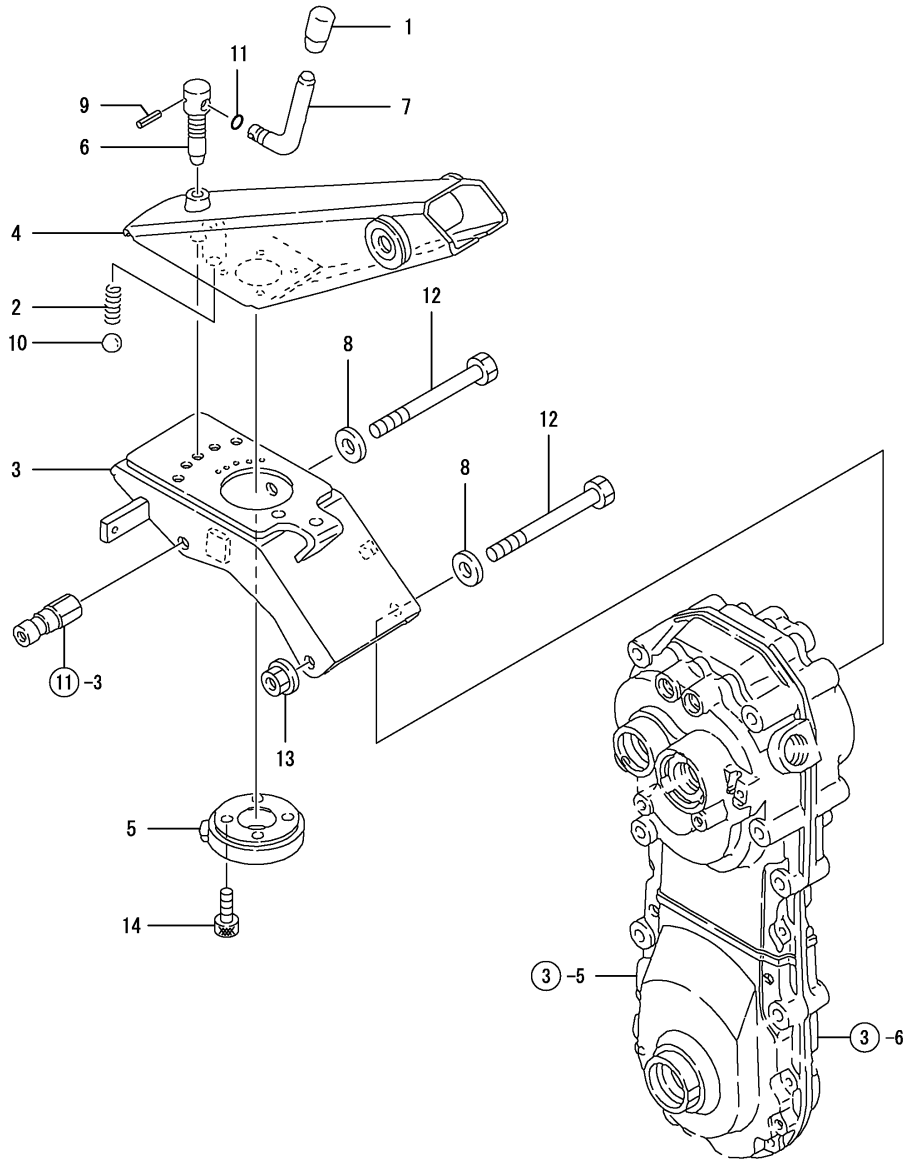


Fig.9. HANDLE COLUMN(MOVE-ROUND)



(A)=YK462,ZX
(B)=
(C)=

(D)=
(E)=
(F)=

No.	Lev.	Parts No.	Description	Q'ty						I	R
				(A)	(B)	(C)	(D)	(E)	(F)		
1	1	1D2040-15480	KNOB,LEVER	1							
2	1	1A1470-40350	SPRING 9X26	1							
3	1	1A2130-51050	BRACKET ASSY,REGULAT	1							
4	1	7A2139-51100	HANDLE FRAME PL ASY	1							
5	1	1A2130-51200	METAL,MOVE-RD.CORE	1							
6	1	1A2130-51210	PIN, LOCK	1							
7	1	1A2130-51220	LEVER,WHT.MOVE-ROUND	1							
8	1	22137-100000	WASHER, 10	2							
9	1	22351-040016	PIN, SPRING 4.0X16	1							
10	1	24190-120001	BALL, STEEL 3/8	1							
11	1	24311-000050	O-RING, 1AP5.0	1							
12	1	26157-101002	BOLT, M10X100 PLATED	2							
13	1	26377-100002	NUT, M10	1							
14	1	26450-080202	BOLT, M8X 20	4							

Fig.10. HANDLE

(A)=YK462,ZX
 (B)=
 (C)=

(D)=
 (E)=
 (F)=

No.	Lev.	Parts No.	Description	Q'ty						I	R
				(A)	(B)	(C)	(D)	(E)	(F)		
1	1	1A2139-51400	LEVER CMP.,HANDLE LC	1							
2	1	1A2000-51430	BOLT 12X125	1							
3	1	1A2139-51551	HANDLE CMP	1							
4	1	192040-56220	GRIP,HANDLE	2							
5	1	1E6570-65750	GRIP,CONT.LEVER BLK.	1							
6	1	1E6102-84970	BAND 140,WIRE LOCK	2							
7	1	22137-120000	WASHER, 12	1							
8	1	22217-120000	WASHER, SPRING 12	1							
9	1	1A2130-51400	COVER,HANDLE FRAME	1							
10	1	1A1750-90060	SCREW 5X16,TAPPING	1							
11	1	1A1750-90150	WASHER 5,PLAIN	1							

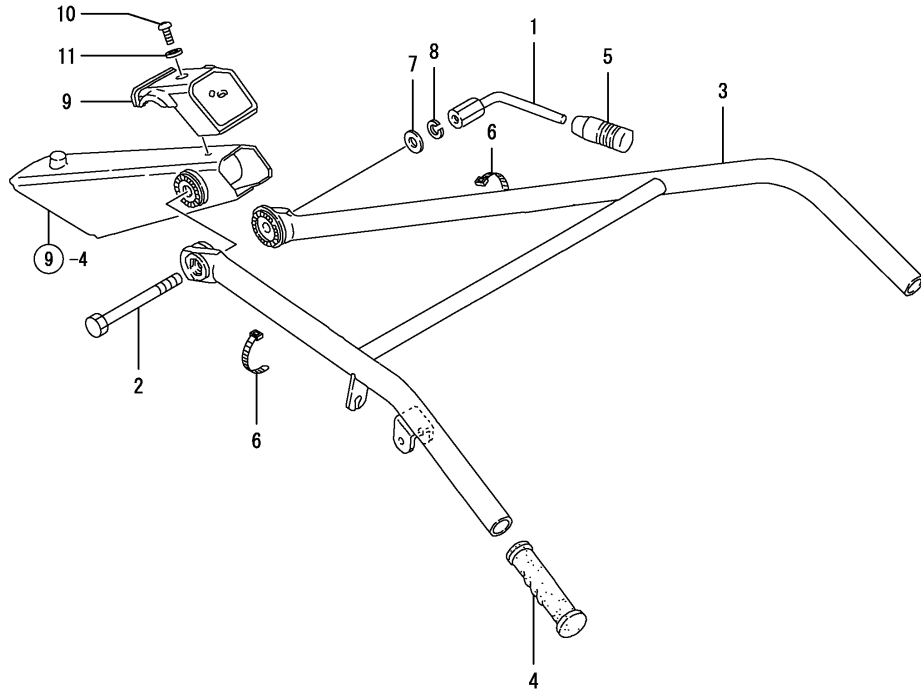
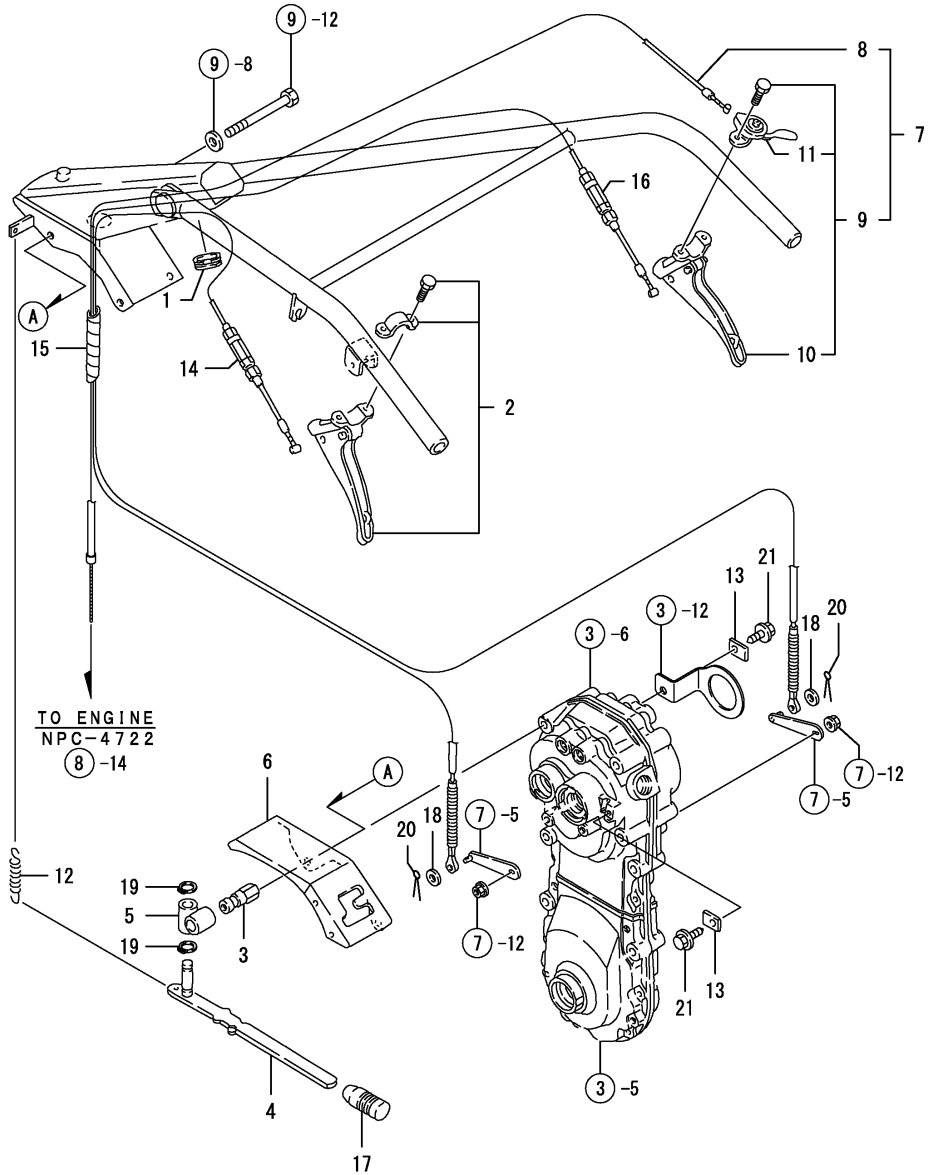


Fig.11. CONTROL LEVER 1



(A)=YK462,ZX

(B)=

(C)=

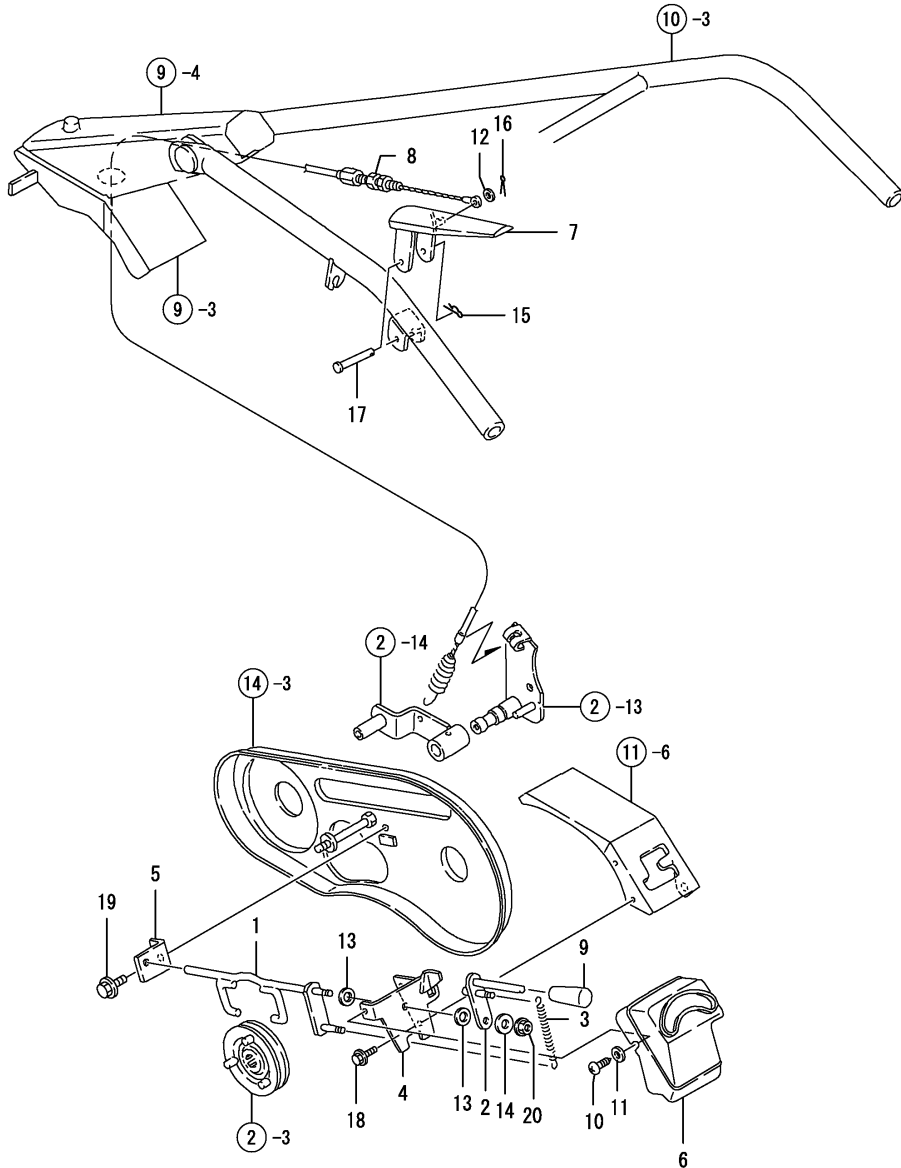
(D)=

(E)=

(F)=

No.	Lev.	Parts No.	Description	Qty						I	R
				(A)	(B)	(C)	(D)	(E)	(F)		
1	1	1A1470-40301	BAND,WIRE PROTECTIVE	1							
2	1	7C6220-52840	LEVER ASSY, CLUTCH L	1							
3	1	1A2130-55050	PIN,CHG.LVR.FULCRUM	1							
4	1	1A2139-55100	LEVER COMP.,CHANGE	1							
5	1	1A2130-55150	FULCRUM COMP.,CHANGE	1							
6	1	1A2139-55200	COVER 422 CMP,CHANGE	1							
7	1	1A2009-55800	LEVER R SET,SD.CLTCH	1							
8	2	1A2000-55620	WIRE,ACCELERATOR	1							
9	2	1A1479-55780	LEVER R,SIDE CLUTCH	1							
10	3	7C6220-52910	LEVER ASSY, CLUTCH R	1							
11	3	1A1479-55790	ACCELERAT.LEVER	1							
12	1	1A2000-55830	SPRING,CHANGE LEVER	1							
13	1	1A2130-55900	CLAMP,SD.CLUTCH WIRE	2							
14	1	1A2139-55900	WIRE ASSY, L	1							
15	1	1A2130-55950	TUBE 15X180,COILED	1							
16	1	1A2139-55950	WIRE ASSY, R	1							
17	1	1E6570-65750	GRIP,CONT.LEVER BLK.	1							
18	1	22137-060000	WASHER, 6	2							
19	1	22242-000120	RING, 12	2							
20	1	22417-200100	COTTER PIN 2.0X10	2							
21	1	26476-060142	SCREW, TAPPING M6X14	2							

Fig.12. CONTROL LEVER 2

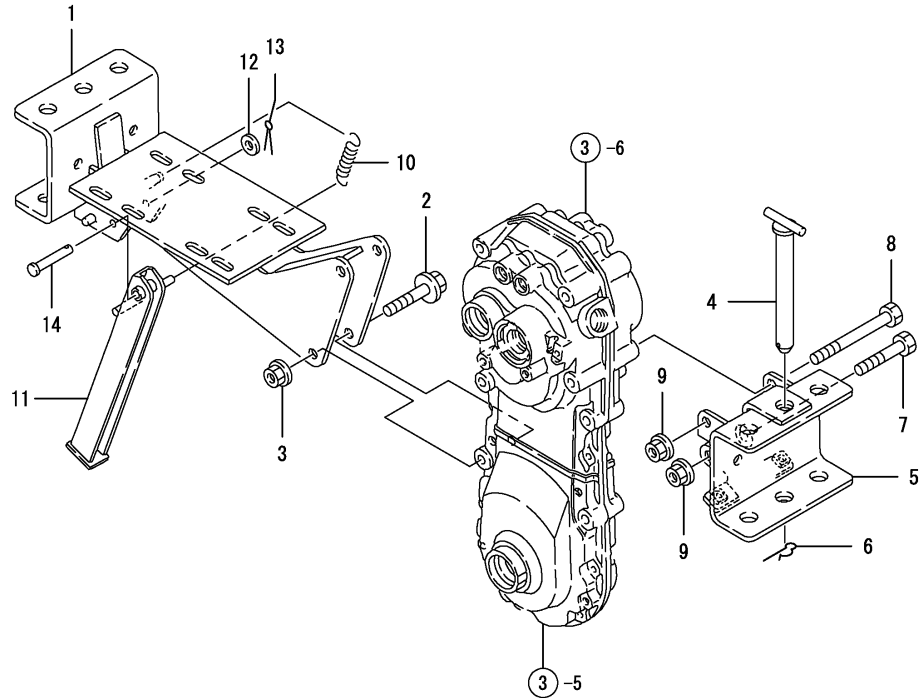


(A)=YK462,ZX
(B)=
(C)=

(D)=
(E)=
(F)=

No.	Lev.	Parts No.	Description	Q'ty						I	R
				(A)	(B)	(C)	(D)	(E)	(F)		
1	1	1A2009-55101	GRIP,CONT.LEVER BLK.	1							
2	1	1A2009-55200	ARM COMP.,SWITCHING	1							
3	1	1A2009-55240	SPRING 8X60,TENSION	1							
4	1	1A2139-55300	FULCRUM A 422	1							
5	1	1A2139-55310	FULCRUM B 422	1							
6	1	1A2009-55350	COVER,SUB-CHANGE	1							
7	1	1A2009-55400	LEVER COMP.,DEADMAN	1							
8	1	1A2139-55770	WIRE CMP,MAIN CLUTCH	1							
9	1	1E7250-63300	GRIP	1							
10	1	1A1750-90050	SCREW 5X10,TAPPING	1							
11	1	1A1750-90150	WASHER 5,PLAIN	1							
12	1	22137-060000	WASHER, 6	1							
13	1	22137-080000	WASHER, 8	2							
14	1	22157-060000	WASHER, 6	1							
15	1	22360-060000	PIN, SNAP 6	1							
16	1	22417-200100	COTTER PIN 2.0X10	1							
17	1	22486-080400	PIN, H 8X 40	1							
18	1	26107-060122	BOLT M 6X 12 PLATED	2							
19	1	26107-080162	BOLT M 8X 16 PLATED	1							
20	1	26367-060002	NUT, M6	1							

Fig.13. ENGINE FRAME & HITCH



(A)=YK462,ZX
(B)=
(C)=

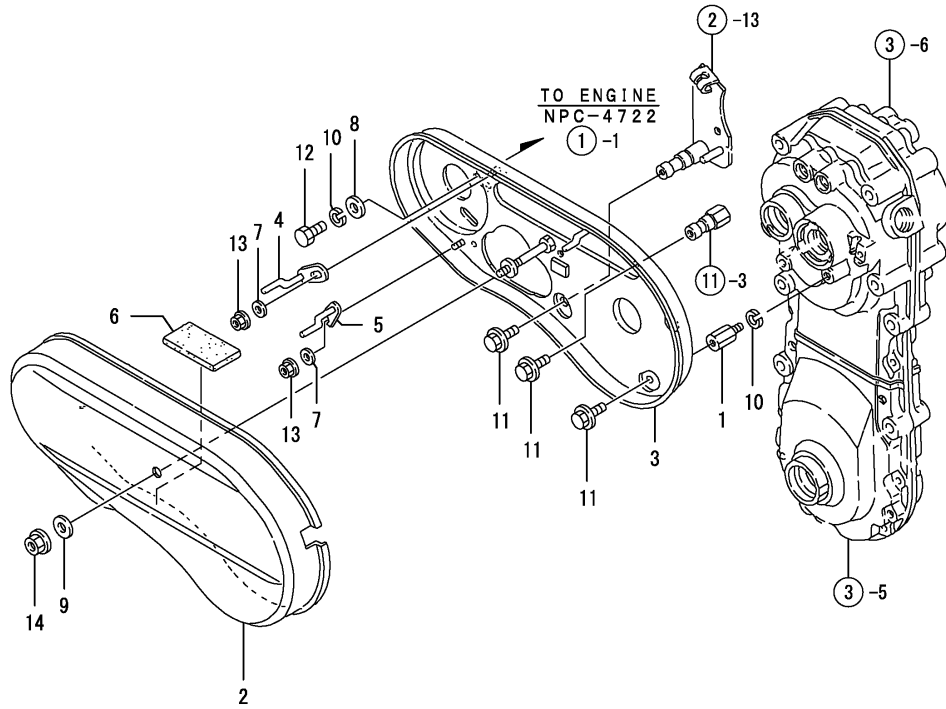
(D)=
(E)=
(F)=

No.	Lev.	Parts No.	Description	Q'ty						I	R
				(A)	(B)	(C)	(D)	(E)	(F)		
1	1	1A2139-61000	FRAME 422 CMP.ENGINE	1							
2	1	26137-100502	BOLT, M10X 50 PLATED	2							
3	1	26377-100002	NUT, M10	2							
4	1	1A2139-46000	PIN, HITCH	1							
5	1	1A2138-61200	HITCH 95-B COMPL.	1							
6	1	22360-160000	PIN, SNAP 16	1							
6-1	1	1A2860-61450	SNAP PIN 16	1							N
(A=FXXXXX)											
7	1	26156-100552	BOLT, M10X 55 PLATED	1							
8	1	26156-100952	BOLT, M10X 95 PLATED	1							
9	1	26367-100002	NUT, M10	2							
10	1	1A1105-16001	SPRING,MN.CLTCH LVR.	1							
11	1	1A2000-61300	STAND COMPL.	1							
12	1	22137-080000	WASHER, 8	1							
13	1	22417-200180	COTTER PIN 2.0X18	1							
14	1	22486-080450	PIN, H 8X 45	1							

Fig.14. BELT COVER

(A)=YK462,ZX
(B)=
(C)=

(D)=
(E)=
(F)=



No.	Lev.	Parts No.	Description	Qty						I	R
				(A)	(B)	(C)	(D)	(E)	(F)		
1	1	1A1490-10340	STUD 22.5,BACK COVER	1							
2	1	7A2139-62100	BELT COVER PLASY	1							
3	1	1A2139-62200	COVER 422 COMP.,REAR	1							
4	1	1A2000-62400	RETAINER COMP.,BELT	1							
5	1	1A2139-62400	RETAINER CMP,BELT LW	1							
6	1	1A2139-62480	SEAT 100X40X5	1							
7	1	22137-060000	WASHER, 6	2							
8	1	22137-080000	WASHER, 8	2							
9	1	22157-080000	WASHER, 8	1							
10	1	22217-080000	WASHER, SPRING 8	3							
11	1	26106-080122	BOLT, M8X 12 PLATED	3							
12	1	26117-080162	BOLT M 8X 16 PLATED	2							
13	1	26367-060002	NUT, M6	2							
14	1	26367-080002	NUT, M8	1							

Fig.15. BONNET

(A)=YK462,ZX
(B)=
(C)=

(D)=
(E)=
(F)=

No.	Lev.	Parts No.	Description	Q'ty						I	R
				(A)	(B)	(C)	(D)	(E)	(F)		
1	1	1A2000-64100	MASK, FRONT	1							
2	1	1A2150-64201	COVER,REAR(40W)	1							
3	1	1A2000-64210	WASHER 6X19X1.0	1							
4	1	1A2000-64220	SCREW 6X16	1							
5	1	1A1750-90050	SCREW 5X10,TAPPING	2							
6	1	1A1750-90150	WASHER 5,PLAIN	2							

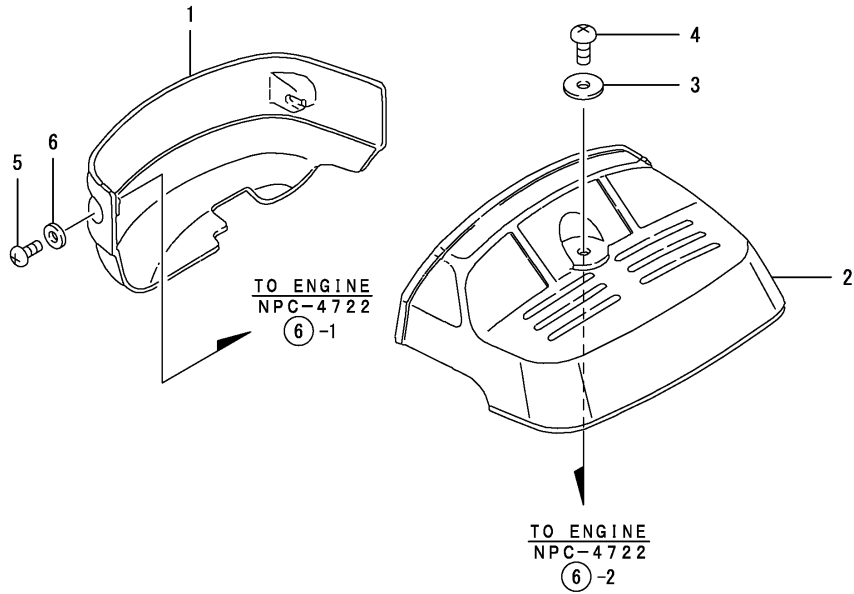


Fig.16. ELECTRICAL PARTS

(A)=YK462,ZX
(B)=
(C)=

(D)=
(E)=
(F)=

No.	Lev.	Parts No.	Description	Q'ty						I	R
				(A)	(B)	(C)	(D)	(E)	(F)		
1	1	1A1750-40800	SWITCH,STOP	1							
2	1	1A1750-40850	CORD,EARTH	1							
3	1	1A2000-83100	CORD,STOP SWITCH	1							
4	1	1A1750-90060	SCREW 5X16,TAPPING	1							
5	1	26367-080002	NUT, M8	1							

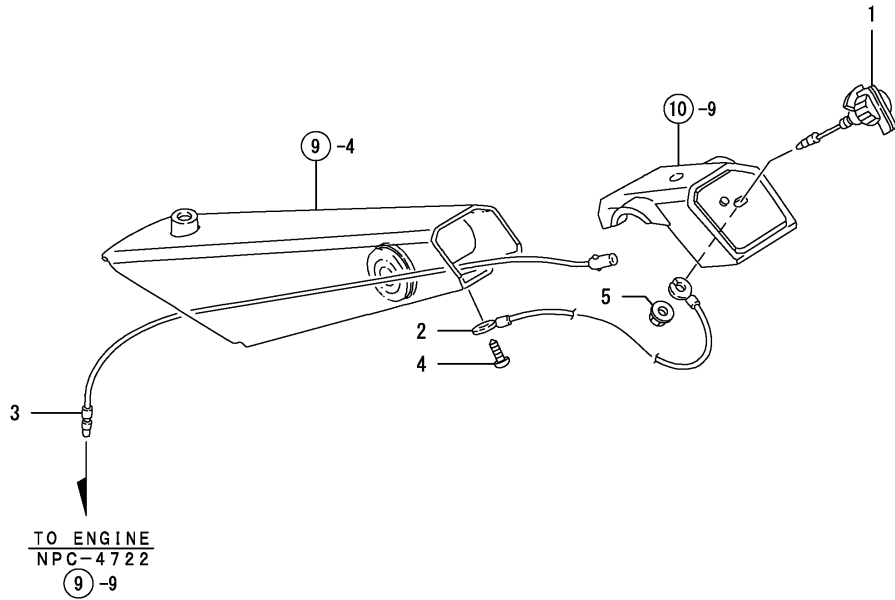


Fig.17. LABELS

(A)=YK462,ZX

(B)=

(C)=

(D)=

(E)=

(F)=

No.	Lev.	Parts No.	Description	Q'ty						I	R
				(A)	(B)	(C)	(D)	(E)	(F)		
1	1	1D1360-17040	MARK,OIL	1							
2	1	1A2132-86110	LABEL 1700	1							
3	1	1A2139-86150	LABEL 462,BELT COVER	1							
4	1	1A2009-86200	LABEL,SUB-CHANGE	1							
5	1	1A2138-86200	LABEL 382,CHANGE	1							
6	1	1A2179-86210		1							
7	1	1A2130-86320	LABEL,FUEL TANK	1							
8	1	1A2009-86340	LABEL,MAIN CLUTCH	1							
9	1	1A2099-86360	LABEL,FUEL COCK	1							
10	1	1A2130-86500	LABEL,HANDLE COVER	1							
11	1	1A2099-86820	LABEL,ENG.OIL,ITA	1							
12	1	1A1103-88800	BAND L,MARK	1							
13	1	1A1103-88810	BAND R,MARK	1							

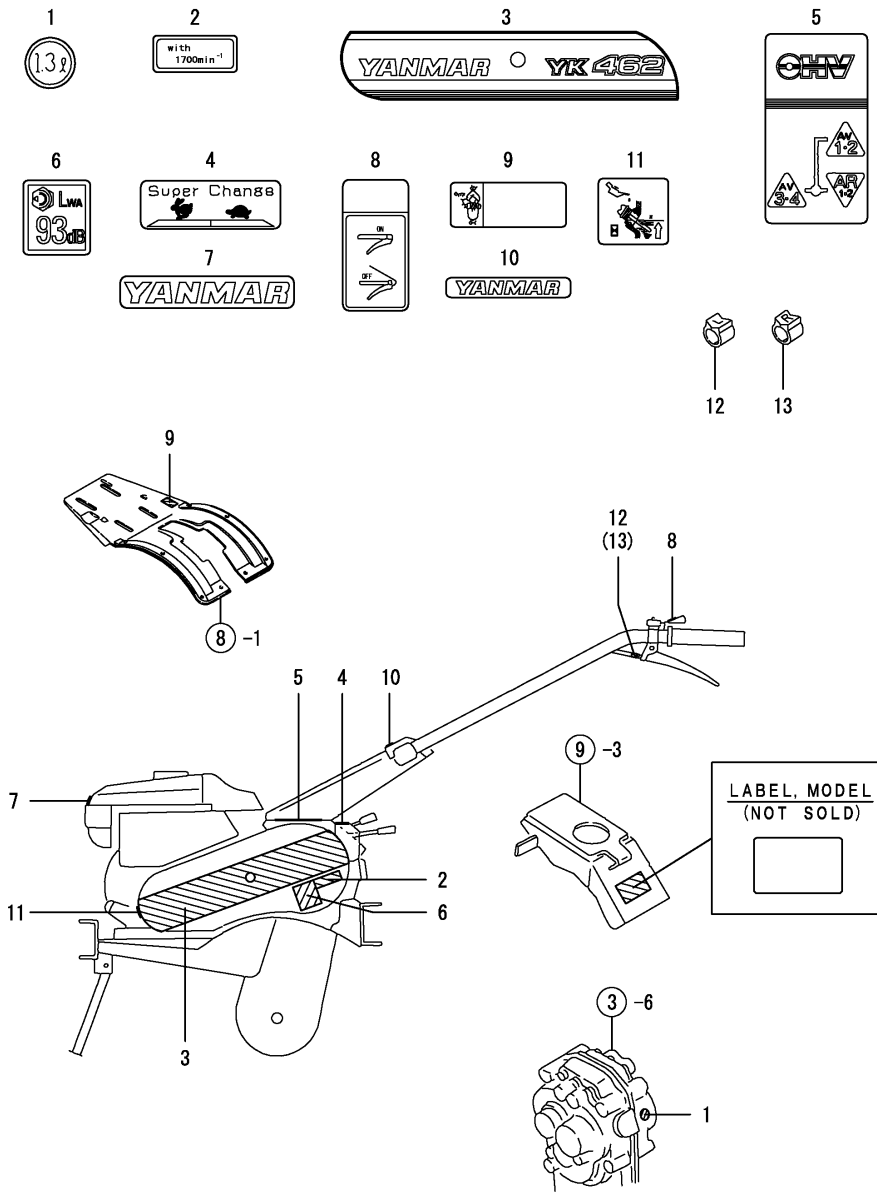
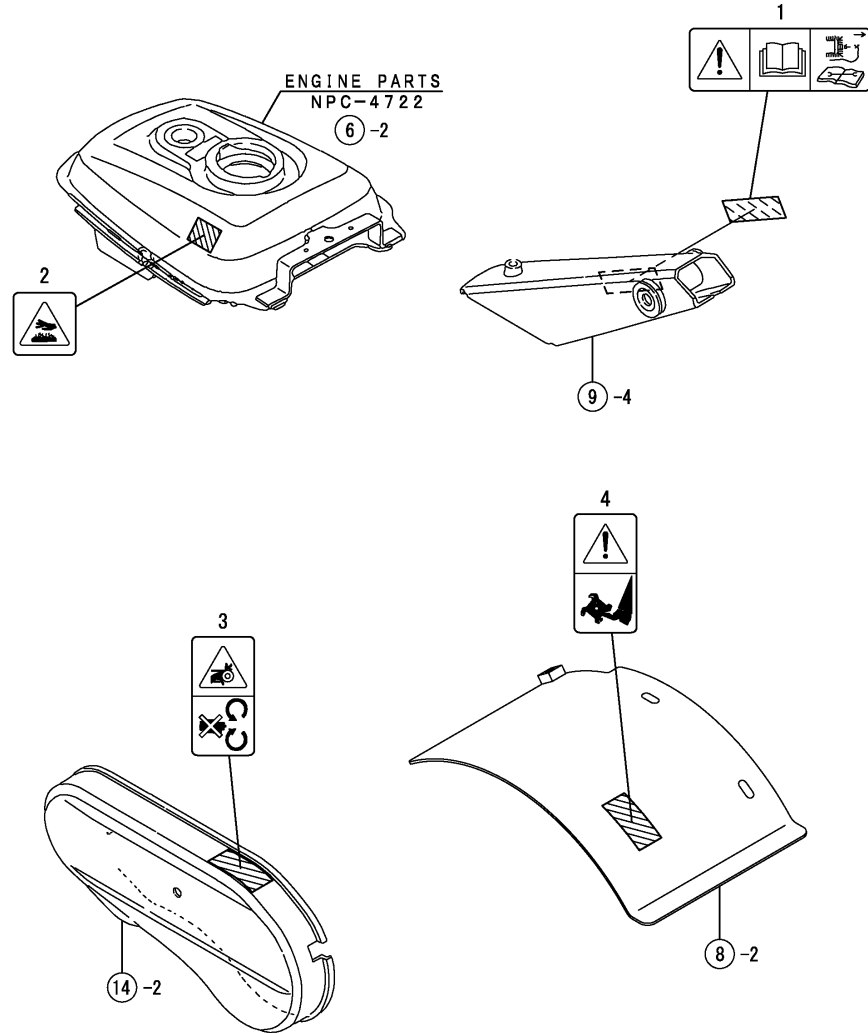


Fig.18. LABELS(SAFETY)



(A)=YK462,ZX
(B)=
(C)=

(D)=
(E)=
(F)=

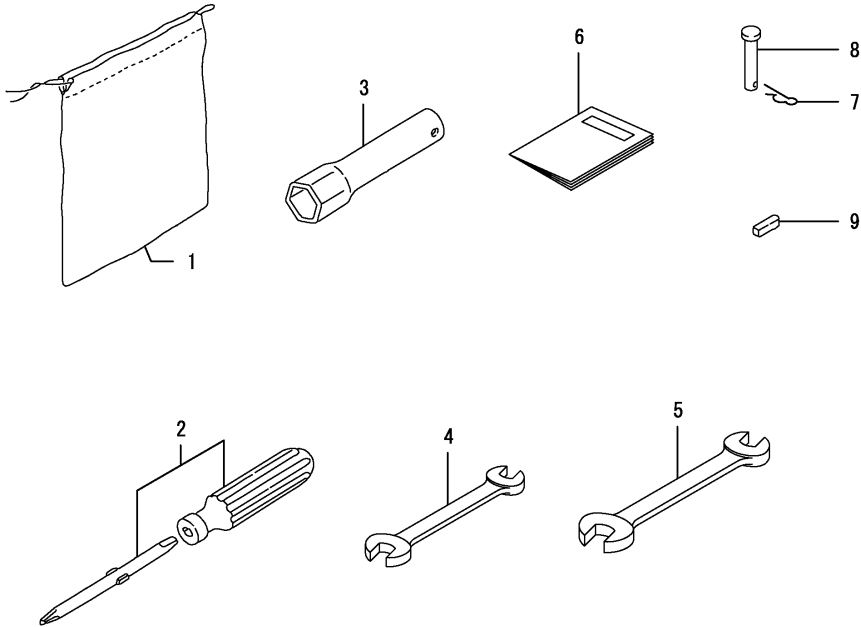
No.	Lev.	Parts No.	Description	Q'ty						I	R
				(A)	(B)	(C)	(D)	(E)	(F)		
1	1	1A2199-86700	MARK,HANDLING CAUTN	1							
2	1	1A2199-86720	MARK,HI-TEMP.CAUTION	1							
3	1	1A2199-86840	MARK,BELT CVR.CAUTN	1							
4	1	1A2199-86900	MARK,ROTARY CAUTION	1							

Fig.19. TOOLS & ACCESSORIES

(A)=YK462,ZX
(B)=
(C)=

(D)=
(E)=
(F)=

No.	Lev.	Parts No.	Description	Q'ty						I	R
				(A)	(B)	(C)	(D)	(E)	(F)		
1	1	1A1750-83900	TOOL BAG	1							
2	1	1D2040-87060	SCREWDRIVER,COMBINAT	1							
3	1	160110-92700	WRENCH, 21 L140	1							
4	1	28110-100120	SPANNER, 10X12	1							
5	1	28110-120140	SPANNER, 12X14	1							
6	1	1A2139-88000	MANUAL	1							
7	1	22372-060000	PIN, SNAP 6	2							
8	1	22487-060400	PIN 6X 40	2							
9	1	22550-050201	KEY, 5X 20	1							



Parts No. Index

Parts No.	Fig. No.	Ref. No.
160110-92700	19	3
192040-56220	10	4
194405-83920	4	12
	5	4
1A1103-88800	17	12
1A1103-88810	17	13
1A1105-16001	13	10
1A1105-23210	2	4
1A1220-28290	3	11
1A1470-20090	3	1
1A1470-20700	7	1
1A1470-40301	11	1
1A1470-40350	9	2
1A1479-55780	11	9
1A1479-55790	11	11
1A1490-10340	14	1
1A1750-20410	3	2
1A1750-20421	3	3
1A1750-20431	3	4
1A1750-40800	16	1
1A1750-40850	16	2
1A1750-83900	19	1
1A1750-90050	12	10
	15	5
1A1750-90060	10	10
	16	4
1A1750-90150	10	11
	12	11
	15	6
1A1750-90200	6	6
1A1950-21100	3	5
1A1950-21201	3	9
1A1950-27750	7	6
1A1950-27800	7	7
1A2000-13190	2	12
1A2000-24520	5	7
1A2000-24530	5	8
1A2000-24550	5	9
1A2000-27530	7	2
1A2000-27600	7	3
1A2000-27650	7	4
1A2000-51430	10	2
1A2000-55620	11	8
1A2000-55830	11	12
1A2000-61300	13	11
1A2000-62400	14	4
1A2000-64100	15	1
1A2000-64210	15	3
1A2000-64220	15	4
1A2000-83100	16	3

Parts No.	Fig. No.	Ref. No.
1A2001-13051	2	10
1A2001-13100	2	11
1A2001-21250	3	10
1A2009-13301	2	1
1A2009-13342	2	3
1A2009-24501	5	5
1A2009-24511	5	6
1A2009-55101	12	1
1A2009-55200	12	2
1A2009-55240	12	3
1A2009-55350	12	6
1A2009-55400	12	7
1A2009-55800	11	7
1A2009-86200	17	4
1A2009-86340	17	8
1A2099-86360	17	9
1A2099-86820	17	11
1A2130-13200	2	13
1A2130-21110	3	6
1A2130-21150	3	7
1A2130-21160	3	8
1A2130-23020	4	2
1A2130-23030	4	3
1A2130-23110	4	8
1A2130-23200	4	9
1A2130-23210	4	10
1A2130-23220	4	11
1A2130-23830	5	1
1A2130-27000	6	1
1A2130-27050	6	2
1A2130-27100	6	3
1A2130-27700	7	5
1A2130-32000	8	1
1A2130-51050	9	3
1A2130-51200	9	5
1A2130-51210	9	6
1A2130-51220	9	7
1A2130-51400	10	9
1A2130-55050	11	3
1A2130-55150	11	5
1A2130-55900	11	13
1A2130-55950	11	15
1A2130-86320	17	7
1A2130-86500	17	10
1A2132-86110	17	2
1A2138-61200	13	5
1A2138-86200	17	5
1A2139-12000	1	7
1A2139-13311	2	2
1A2139-13510	2	14

Parts No.	Fig. No.	Ref. No.
1A2139-23010	4	1
1A2139-23900	5	2
1A2139-23950	5	3
1A2139-28300	3	12
1A2139-32150	8	3
1A2139-46000	13	4
1A2139-51400	10	1
1A2139-51551	10	3
1A2139-55100	11	4
1A2139-55200	11	6
1A2139-55300	12	4
1A2139-55310	12	5
1A2139-55770	12	8
1A2139-55900	11	14
1A2139-55950	11	16
1A2139-61000	13	1
1A2139-62200	14	3
1A2139-62400	14	5
1A2139-62480	14	6
1A2139-86150	17	3
1A2139-88000	19	6
1A2150-64201	15	2
1A2171-90050	5	10
1A2173-27900	6	4
1A2179-86210	17	6
1A2199-86700	18	1
1A2199-86720	18	2
1A2199-86840	18	3
1A2199-86900	18	4
1A2860-61450	13	6 -1
1D1140-11420	1	6
1D1360-17040	17	1
1D2040-15480	9	1
1D2040-87060	19	2
1E4060-74090	4	4
1E6102-84970	10	6
1E6150-56040	6	5
1E6570-65750	10	5
	11	17
1E7250-63300	12	9
22137-060000	11	18
	12	12
	14	7
22137-080000	1	1
	12	13
	13	12
	14	8
22137-100000	9	8
22137-120000	10	7
22157-060000	12	14

Parts No.	Fig. No.	Ref. No.
22157-080000	14	9
22217-080000	1	2
	14	10
22217-120000	10	8
22242-000120	11	19
22242-000150	2	5
		15
22242-000170	2	6
	4	5
		13
22252-000350	2	7
22272-000060	2	16
22351-040016	9	9
22360-060000	12	15
22360-160000	13	6
22372-060000	19	7
22417-160120	7	8
22417-200100	11	20
	12	16
22417-200120	7	9
22417-200180	13	13
22486-080400	12	17
22486-080450	13	14
22487-060120	7	10
22487-060400	19	8
22512-050300	1	8
22550-050201	19	9
22867-600160	3	13
23414-080000	3	14
24101-062034	4	6
		14
24101-062054	5	11
24104-060034	2	8
24104-062024	2	9
24190-100001	6	7
24190-120001	5	12
	9	10
24311-000050	9	11
24311-000100	7	11
24421-173008	4	7
25123-003501	1	9
26013-080162	1	10 -1
26013-080164	1	10
26106-060252	3	15
26106-080122	8	4
	14	11
26107-060122	12	18
26107-080122	8	5
26107-080162	12	19
26117-080162	14	12

Parts No. Index

Parts No.	Fig. No.	Ref. No.
26117-080402	1	3
26117-080452	1	4
26137-100502	3	16
	13	2
26156-100552	13	7
26156-100952	13	8
26157-101002	2	17
	9	12
26367-060002	3	17
	12	20
	14	13
26367-080002	7	12
	8	6
	14	14
	16	5
26367-100002	13	9
26377-100002	2	18
	3	18
	9	13
	13	3
26450-080202	9	14
26476-060142	7	13
	11	21
26717-080002	1	5
28110-100120	19	4
28110-120140	19	5
7A2139-32100	8	2
7A2139-51100	9	4
7A2139-62100	14	2
7C6220-52840	11	2
7C6220-52910	11	10

Parts No.	Fig. No.	Ref. No.
-----------	----------	----------

Parts No.	Fig. No.	Ref. No.
-----------	----------	----------

Parts No.	Fig. No.	Ref. No.
-----------	----------	----------